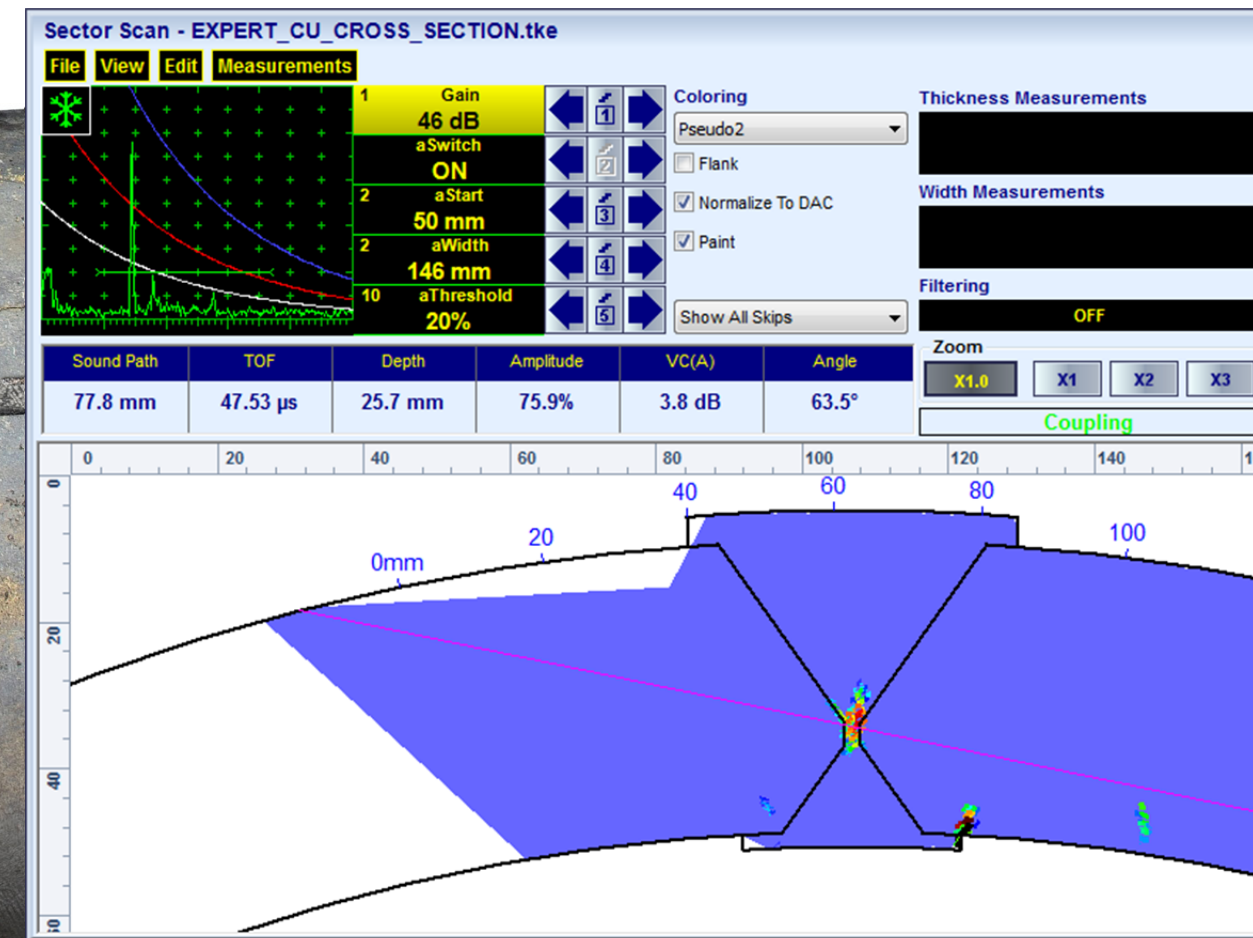




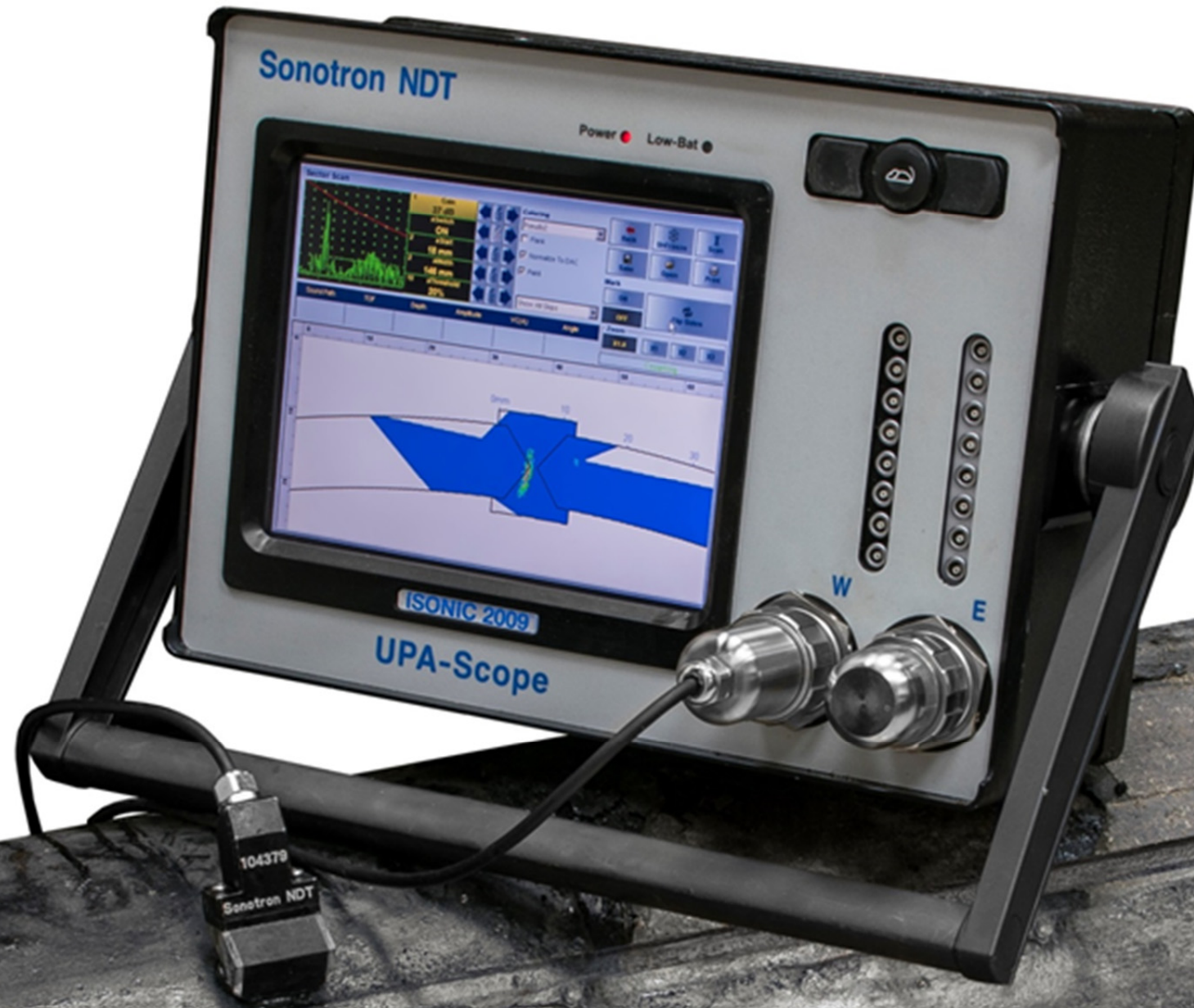
Item	Order Code (Part #)
<p>Inspection SW Application for ISONIC 3510 - Phased Array Modality: Expert CU</p> <ul style="list-style-type: none"> ⇒ Weld Inspection - curved cross section welds - longitudinal welds in pipes, pressure vessels, and the like ⇒ Inspection of the parent material in the tubes, pressure vessels, solid and hollow shafts, and the like for the longitudinal cracks ⇒ Inspection of the tube walls for the corrosion damages - touch point corrosion, CUPS, etc - SRUT GW and shear wave multiple skip scanning above the OD surface - circumferential insonification ⇒ True-To-Geometry Weld Overlay Volume Corrected Imaging - Cross Sectional and Top (C-Scan)- / Side- / End- View and 3D ⇒ Sector-Scan Cross Sectional Coverage ⇒ Intuitive Image Guided PA Pulser Receiver with Beam Forming View ⇒ DAC / TCG Normalization ⇒ Built-In Weld Bevel Editor and Ray Tracer - Scanning Pattern Design ⇒ Independent on TCG Angle Gain Compensation / Gain Per Focal Law Correction ⇒ Automatic Coupling Monitor ⇒ Encoded and Time based C-Scan ⇒ 100% Raw Data Capturing ⇒ FMC/TFM Protocol for the data acquisition and imaging ⇒ Automatic Defects Alarming Upon C-Scan Acquisition Completed ⇒ Automatic Creation of Editable Defects List ⇒ Puzzling Suitable C-Scan Inspection Record - Ability of Scanning Weld In Several Shots from Both Side with Storing a Number of Files Mergeable Into a Single File Inspection Report ⇒ Comprehensive Postprocessing Including: <ul style="list-style-type: none"> → Recovery and Evaluation of Captured A-Scans from the Recorded Cross Sectional Views (Sector Scan) and C-Scans → Recovery of Cross Sectional Views from the Recorded C-Scans → Converting Recorded C-Scans or their Segments into 3D Images → Off-Line Gain Manipulation → Off-Line DAC Normalization of the Recorded Images / DAC Evaluation → Numerous Filtering / Reject Options (by Geometry / Position / By Amplitude db-toDAC / etc) → Defects Sizing → Creation of Defect List and Storing it Into a Separate File → Automatic creating of inspection reports - hard copy / PDF File 	SWA 3510005

Inspection of longitudinal weld

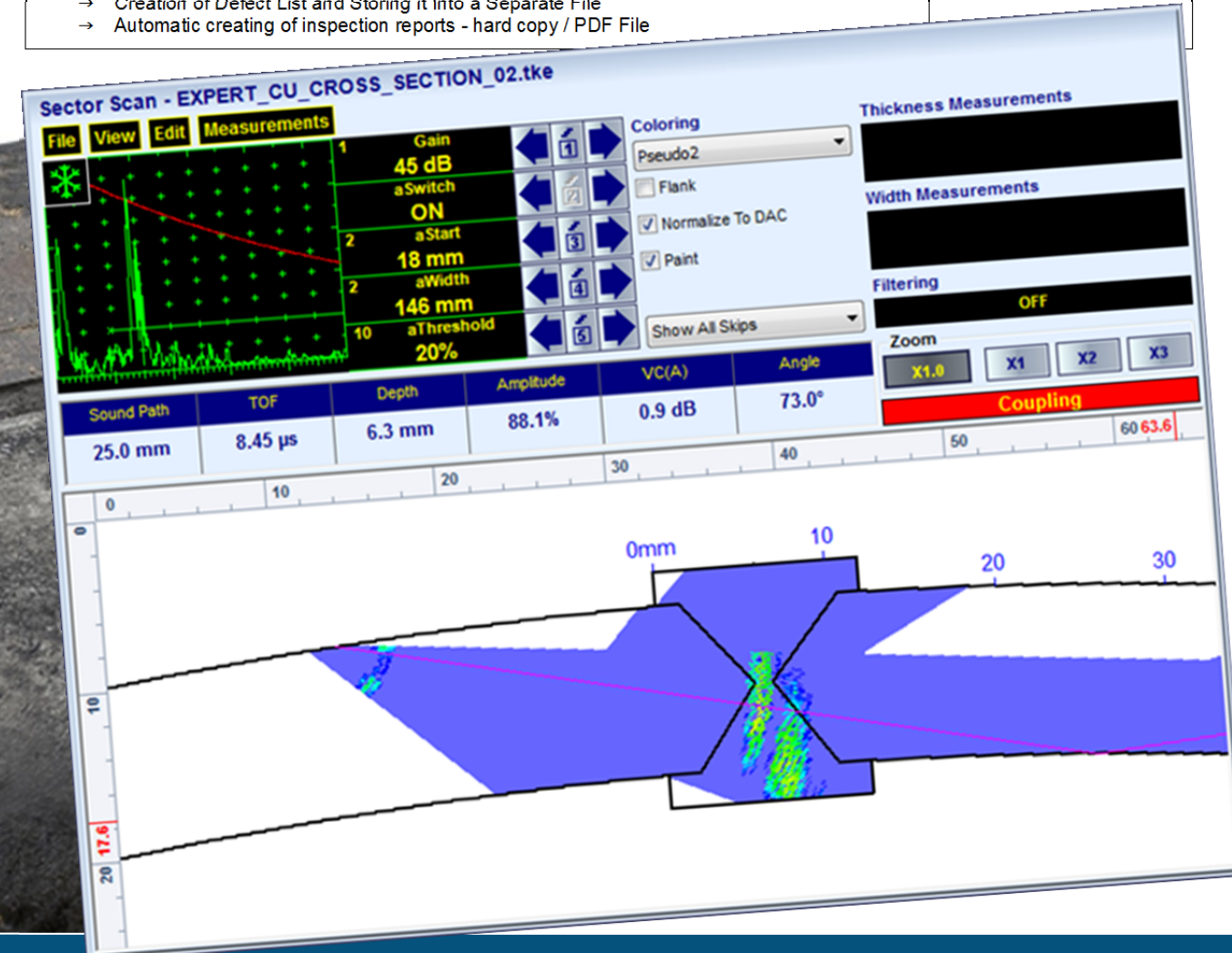




Inspection of longitudinal weld



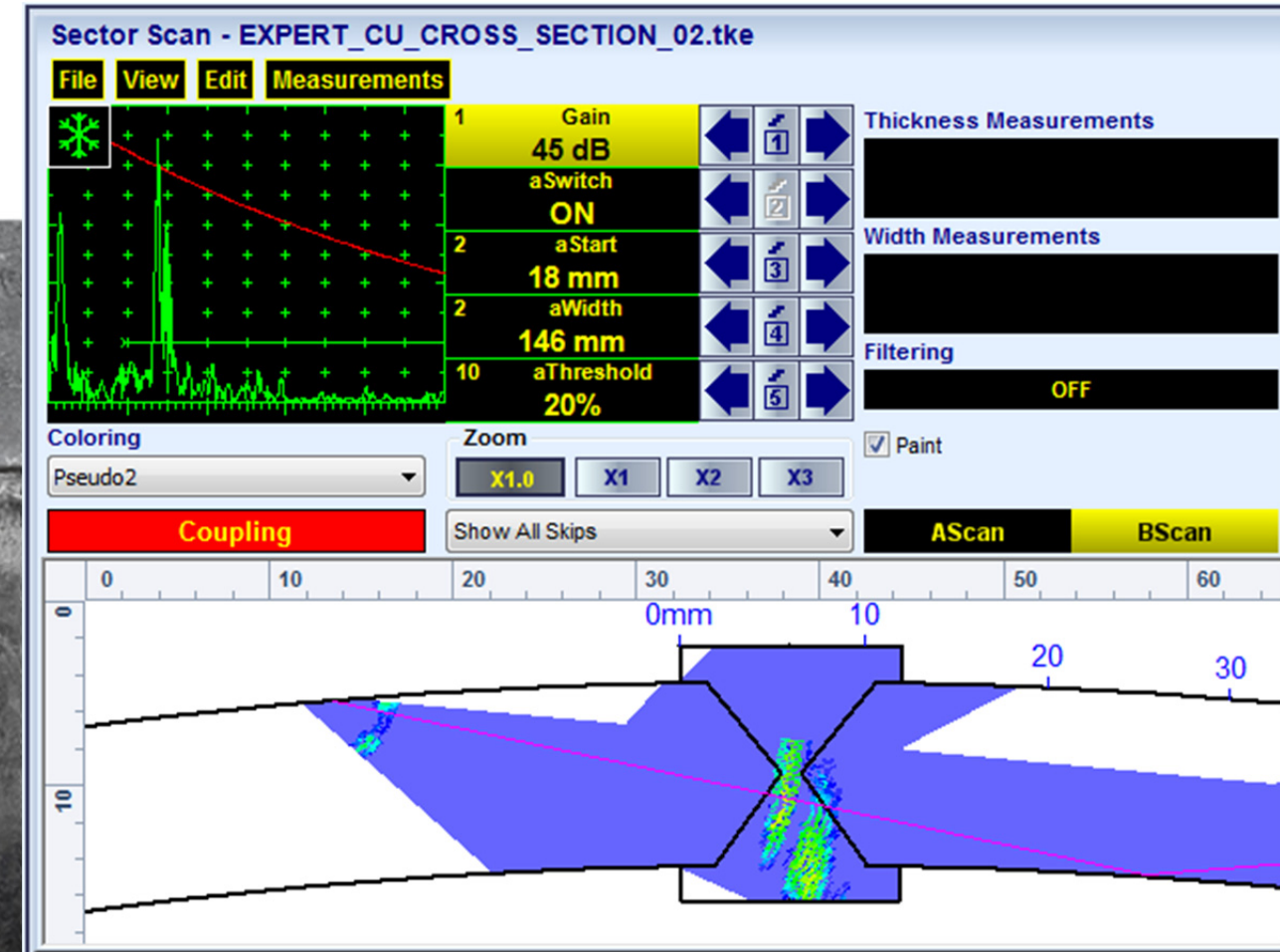
Item	Order Code (Part #)
<p>Inspection SW Application for ISONIC 3510 - Phased Array Modality: Expert CU</p> <ul style="list-style-type: none"> ⇒ Weld Inspection - curved cross section welds - longitudinal welds in pipes, pressure vessels, and the like ⇒ Inspection of the parent material in the tubes, pressure vessels, solid and hollow shafts, and the like for the longitudinal cracks ⇒ Inspection of the tube walls for the corrosion damages - touch point corrosion, CUPS, etc - SRUT GW and shear wave multiple skip <p>scanning above the OD surface - circumferential insonification</p> <ul style="list-style-type: none"> ⇒ True-To-Geometry Weld Overlay Volume Corrected Imaging - Cross Sectional and Top (C-Scan)- / Side- / End- View and 3D ⇒ Sector-Scan Cross Sectional Coverage ⇒ Intuitive Image Guided PA Pulser Receiver with Beam Forming View ⇒ DAC / TCG Normalization ⇒ Built-In Weld Bevel Editor and Ray Tracer - Scanning Pattern Design ⇒ Independent on TCG Angle Gain Compensation / Gain Per Focal Law Correction ⇒ Automatic Coupling Monitor ⇒ Encoded and Time based C-Scan ⇒ 100% Raw Data Capturing ⇒ FMC/TFM Protocol for the data acquisition and imaging ⇒ Automatic Defects Alarming Upon C-Scan Acquisition Completed ⇒ Automatic Creation of Editable Defects List ⇒ Puzzling Suitable C-Scan Inspection Record - Ability of Scanning Weld In Several Shots from Both Side with Storing a Number of Files Mergeable Into a Single File Inspection Report ⇒ Comprehensive Postprocessing Including: <ul style="list-style-type: none"> → Recovery and Evaluation of Captured A-Scans from the Recorded Cross Sectional Views (Sector Scan) and C-Scans → Recovery of Cross Sectional Views from the Recorded C-Scans → Converting Recorded C-Scans or their Segments into 3D Images → Off-Line Gain Manipulation → Off-Line DAC Normalization of the Recorded Images / DAC Evaluation → Numerous Filtering / Reject Options (by Geometry / Position / By Amplitude / dB-to-DAC / etc) → Defects Sizing → Creation of Defect List and Storing it Into a Separate File → Automatic creating of inspection reports - hard copy / PDF File 	SWA 909805



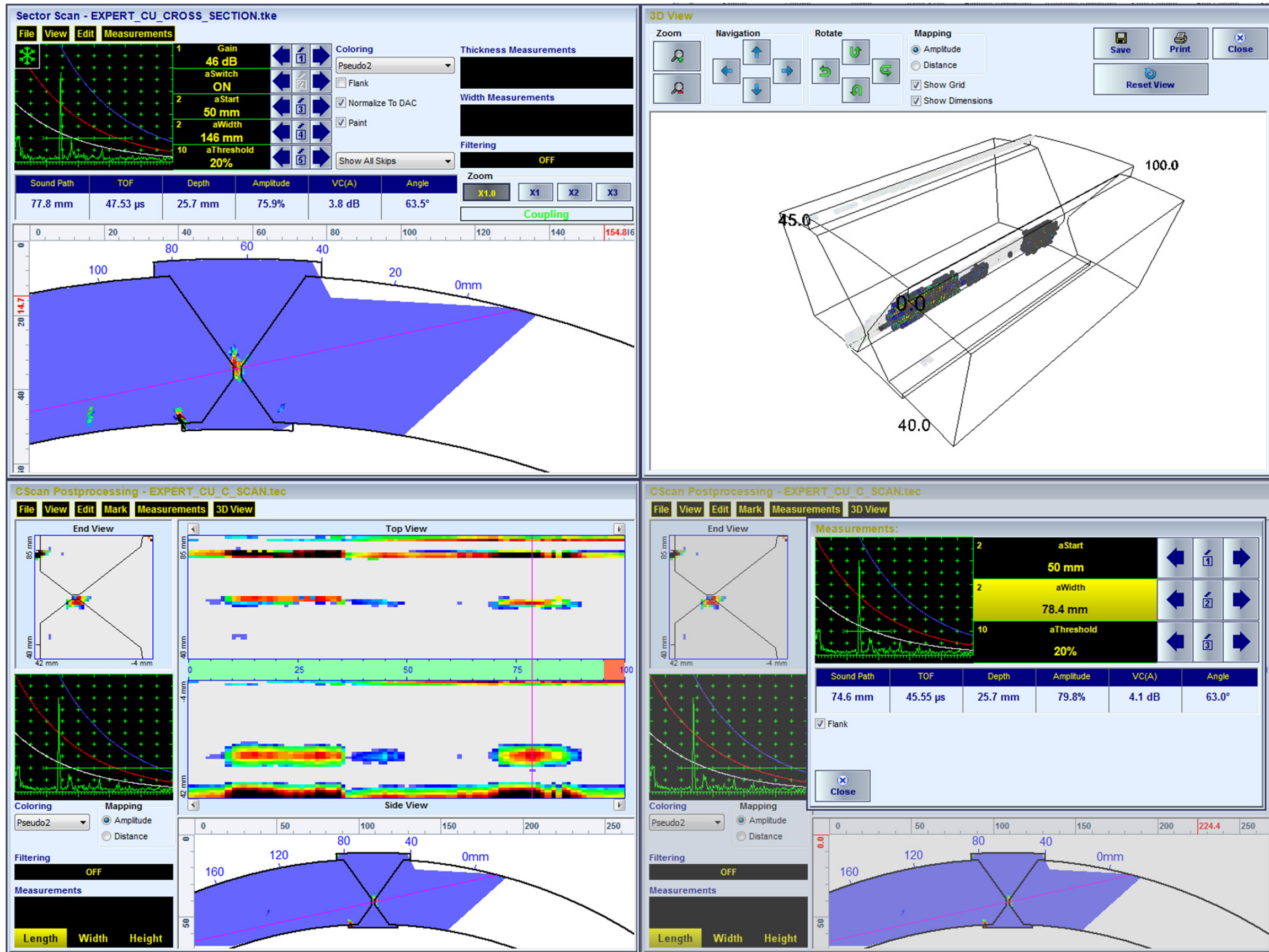
Inspection of longitudinal weld



Item	Order Code (Part #)
<p>Inspection SW Application for ISONIC 3510 - Phased Array Modality: Expert CU</p> <ul style="list-style-type: none"> ⇒ Weld Inspection - curved cross section welds - longitudinal welds in pipes, pressure vessels, and the like ⇒ Inspection of the parent material in the tubes, pressure vessels, solid and hollow shafts, and the like for the longitudinal cracks ⇒ Inspection of the tube walls for the corrosion damages - touch point corrosion, CUPS, etc - SRUT GW and shear wave multiple skip <p>scanning above the OD surface - circumferential insonification</p> <ul style="list-style-type: none"> ⇒ True-To-Geometry Weld Overlay Volume Corrected Imaging - Cross Sectional and Top (C-Scan)- / Side- / End- View and 3D ⇒ Sector-Scan Cross Sectional Coverage ⇒ Intuitive Image Guided PA Pulser Receiver with Beam Forming View ⇒ DAC / TCG Normalization ⇒ Built-In Weld Bevel Editor and Ray Tracer - Scanning Pattern Design ⇒ Independent on TCG Angle Gain Compensation / Gain Per Focal Law Correction ⇒ Automatic Coupling Monitor ⇒ Encoded and Time based C-Scan ⇒ 100% Raw Data Capturing ⇒ FMC/TFM Protocol for the data acquisition and imaging ⇒ Automatic Defects Alarming Upon C-Scan Acquisition Completed ⇒ Automatic Creation of Editable Defects List ⇒ Puzzling Suitable C-Scan Inspection Record - Ability of Scanning Weld In Several Shots from Both Side with Storing a Number of Files Mergeable Into a Single File Inspection Report ⇒ Comprehensive Postprocessing Including: <ul style="list-style-type: none"> → Recovery and Evaluation of Captured A-Scans from the Recorded Cross Sectional Views (Sector Scan) and C-Scans → Recovery of Cross Sectional Views from the Recorded C-Scans → Converting Recorded C-Scans or their Segments into 3D Images → Off-Line Gain Manipulation → Off-Line DAC Normalization of the Recorded Images / DAC Evaluation → Numerous Filtering / Reject Options (by Geometry / Position / By Amplitude db-toDAC / etc) → Defects Sizing → Creation of Defect List and Storing it Into a Separate File → Automatic creating of inspection reports - hard copy / PDF File 	SWA 910805



Typical Postprocessing Screenshots





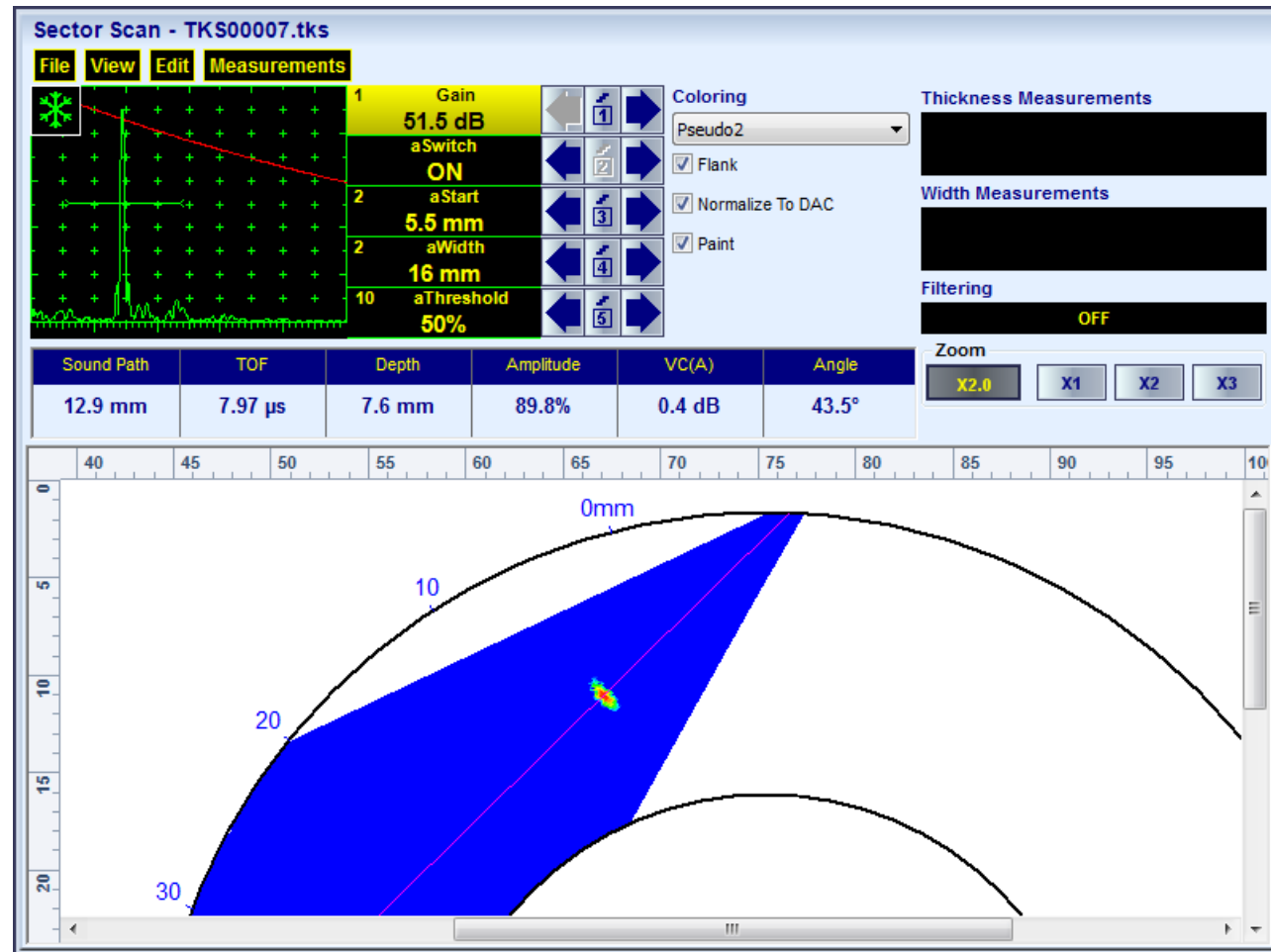
Inspection of rings and tube / vessel walls for the longitudinal cracks – calibration / performance demonstration block



Detection and Evaluation of the Longitudinal Cracks in the Thin Wall Tubes and Tubular Parts



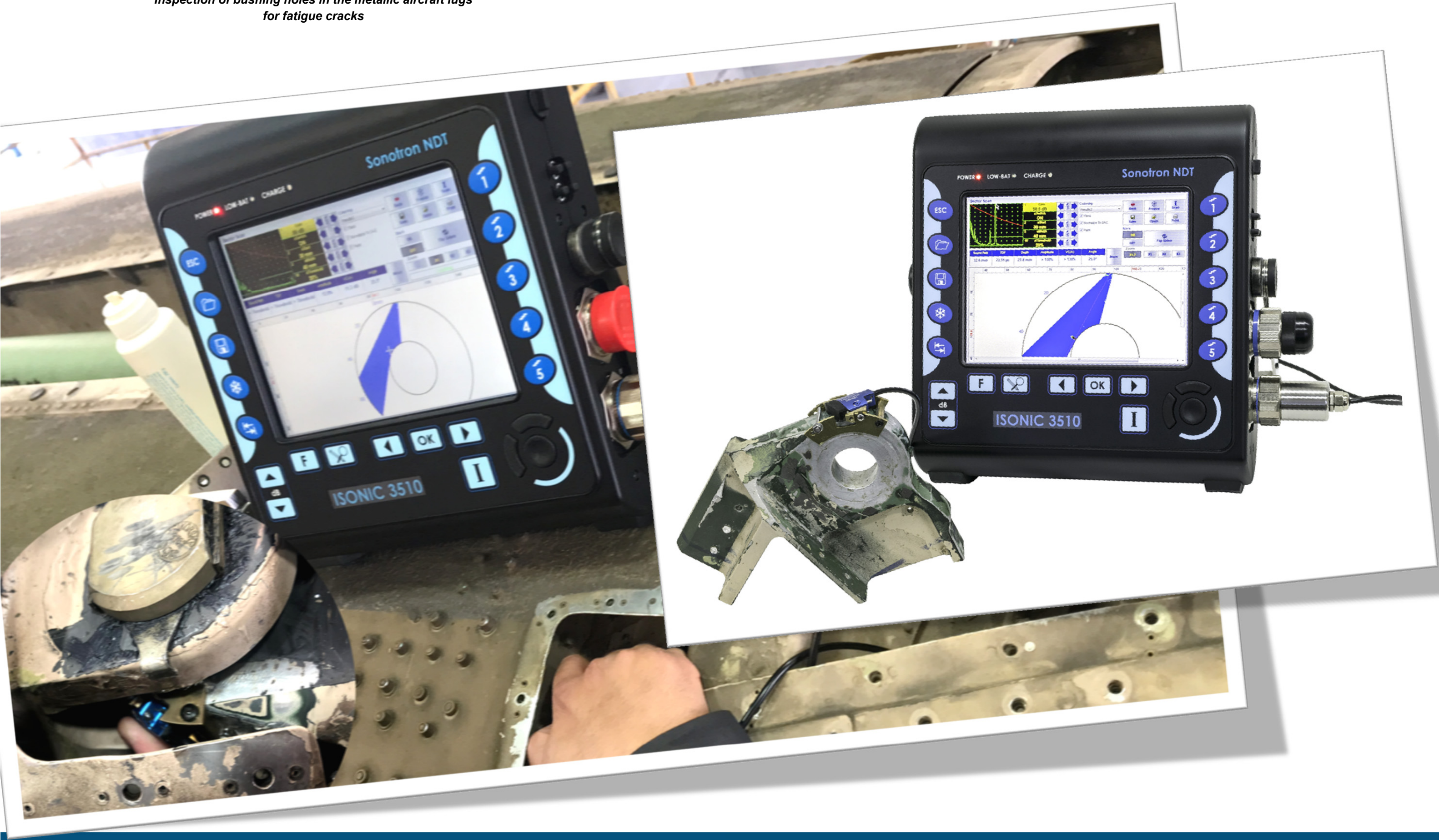
Shear wave inspection of the tubular parts for the in-wall inclusions, cracks, etc – calibration / performance demonstration block



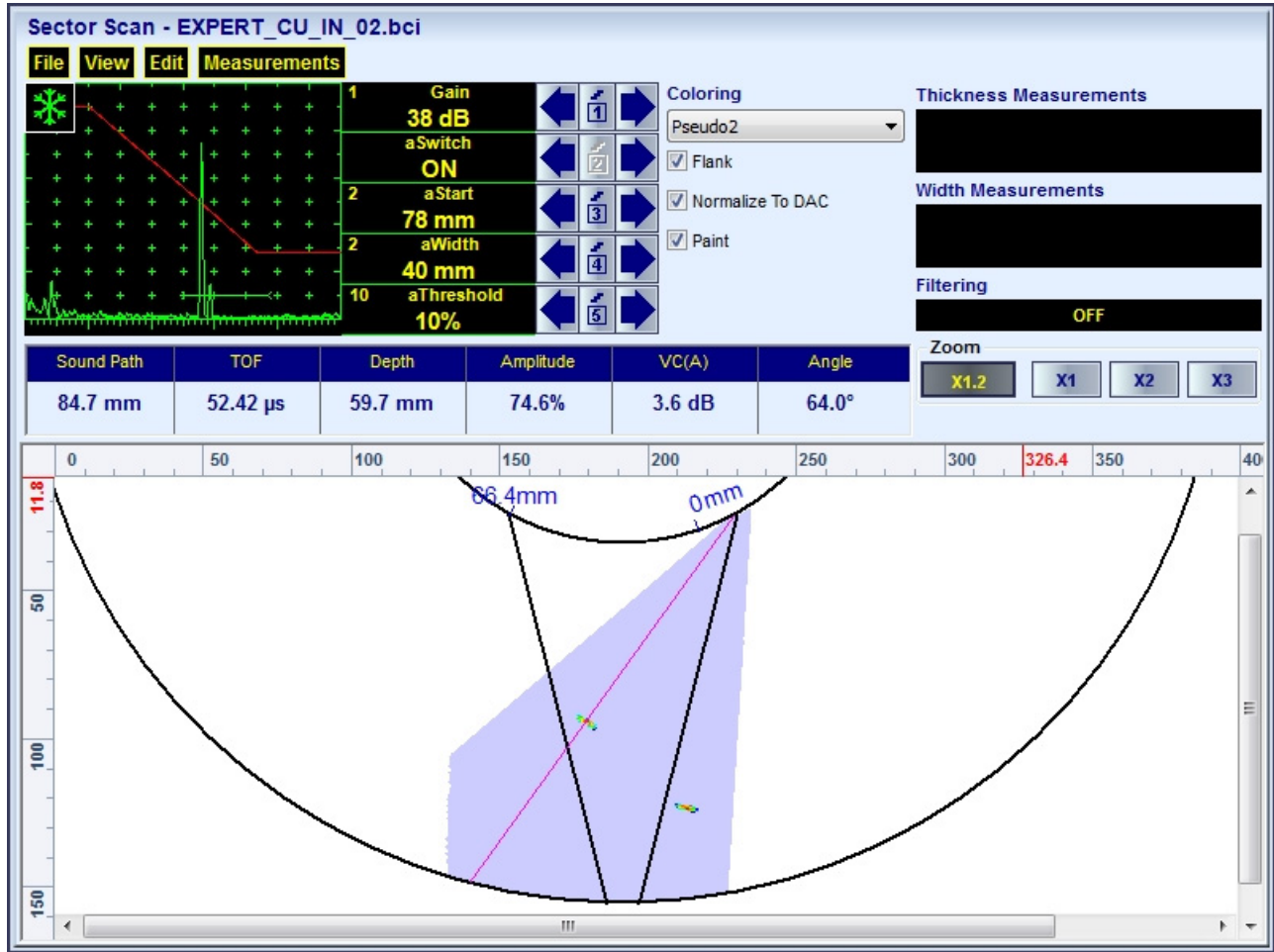
Inspection of the crankshaft for the longitudinal cracks



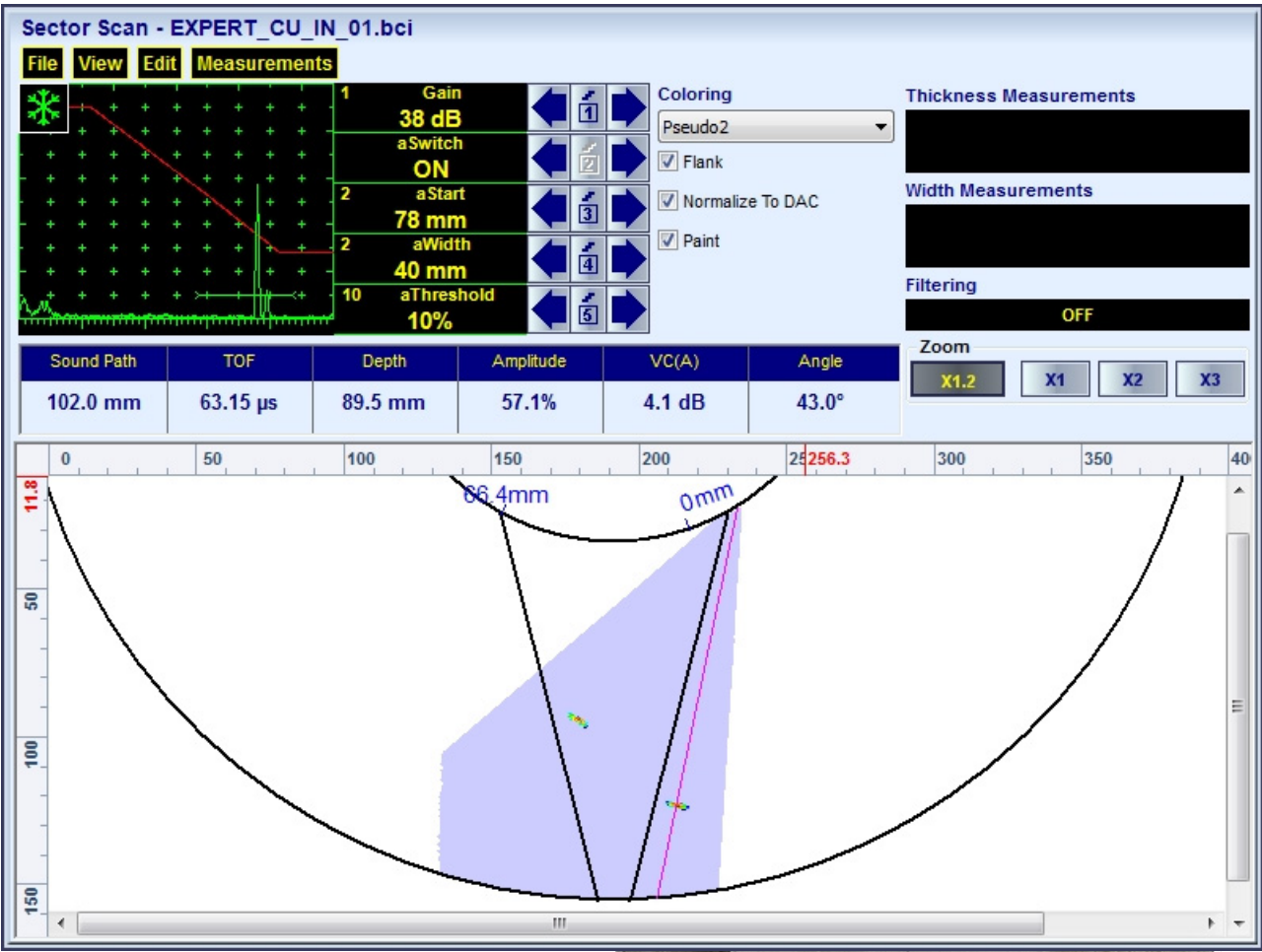
Inspection of bushing holes in the metallic aircraft lugs for fatigue cracks







Item	Order Code (Part #)
Inspection SW Application for ISONIC 3510 - Phased Array Modality: Expert CU IN ⇨ Weld Inspection - curved cross section welds - longitudinal welds in pipes, pressure vessels, and the like ⇨ Inspection of the parent material in the tubes, pressure vessels, hollow shafts, and the like for the longitudinal cracks scanning above the ID surface	SWA3510027
Inspection SW Application for ISONIC 2010 - Phased Array Modality: Expert CU IN ⇨ Weld Inspection - curved cross section welds - longitudinal welds in pipes, pressure vessels, and the like ⇨ Inspection of the parent material in the tubes, pressure vessels, hollow shafts, and the like for the longitudinal cracks scanning above the ID surface	SWA 910827
Inspection SW Application for ISONIC 2009 UPA-Scope - Phased Array Modality: Expert CU IN ⇨ Weld Inspection - curved cross section welds - longitudinal welds in pipes, pressure vessels, and the like ⇨ Inspection of the parent material in the tubes, pressure vessels, hollow shafts, and the like for the longitudinal cracks scanning above the ID surface ⇨ True-To-Geometry Weld Overlay Volume Corrected Imaging - Cross Sectional and Top (C-Scan)- / Side- / End- View and 3D ⇨ Sector-Scan Cross Sectional Coverage ⇨ Intuitive Image Guided PA Pulser Receiver with Beam Forming View ⇨ DAC / TCG Normalization ⇨ Built-In Weld Bevel Editor and Ray Tracer - Scanning Pattern Design ⇨ Independent on TCG Angle Gain Compensation / Gain Per Focal Law Correction ⇨ Automatic Coupling Monitor ⇨ Encoded and Time based C-Scan ⇨ 100% Raw Data Capturing ⇨ FMC/TFM Protocol for the data acquisition and imaging ⇨ Automatic Defects Alarming Upon C-Scan Acquisition Completed ⇨ Automatic Creation of Editable Defects List ⇨ Puzzling Suitable C-Scan Inspection Record - Ability of Scanning Weld In Several Shots from Both Side with Storing a Number of Files Mergeable Into a Single File Inspection Report Comprehensive Postprocessing Including: → Recovery and Evaluation of Captured A-Scans from the Recorded Cross Sectional Views (Sector Scan) and C-Scans → Recovery of Cross Sectional Views from the Recorded C-Scans → Converting Recorded C-Scans or their Segments into 3D Images → Off-Line Gain Manipulation → Off-Line DAC Normalization of the Recorded Images / DAC Evaluation → Numerous Filtering / Reject Options (by Geometry / Position / By Amplitude / dB-to-DAC / etc) → Defects Sizing → Creation of Defect List and Storing it Into a Separate File → Automatic creating of inspection reports - hard copy / PDF File	SWA 909827



4, Pekeris st., Rabin Science Park, Rehovot, 7670204, Israel
 Phone: +972-(0)8-9311000, Fax: +972-(0)8-9477712
 www.sonotronndt.com



Inspection of longitudinal seam – scanning over ID surface of the tube



Inspection of heat exchanger tubes from inside – detection of longitudinal cracks using internal crawler carrying wedged linear array probe with CU_IN contoured contact face – detection of the reference reflector on the OD side of the calibration / performance demonstration block



Inspection of heat exchanger tubes from inside – detection of longitudinal cracks using internal crawler carrying wedged linear array probe with CU_IN contoured contact face – detection of the reference reflector on the ID side of the calibration / performance demonstration block